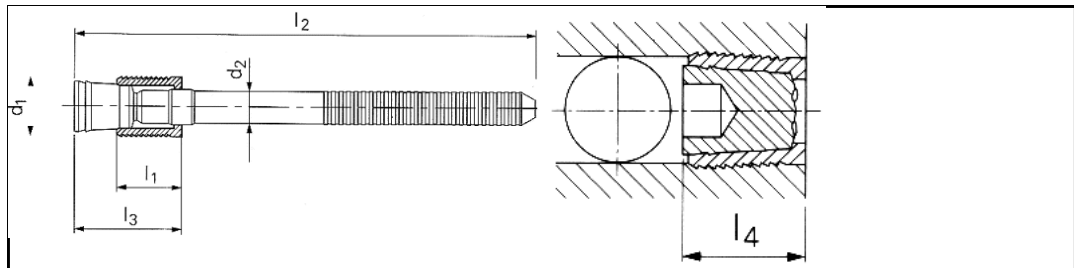


## Data sheet - SK 550-050

### KOENIG-EXPANDER® Uszczelnianie do 500 barów



3D-Data available	
Type	Normal mandrel
Order description	SK 550-050
d1	5.0 mm
l1	5.5 mm
d2	3.00 mm
l2	41 mm
Max. l3	10.0 mm
Max. l4	7.5 mm
Bore diameter	5.0 mm
Bore tolerance	+0.12 0
Sleeve material	Case hardening steel, gun metal finish
Mandrel material	Heat-treatable steel or cold-flow press steel special oil film lubrication
Information	Sleeve and mandrel crimped together Suitable for automated processing
Packaging unit	100 / 1000

uniform resource locator: